

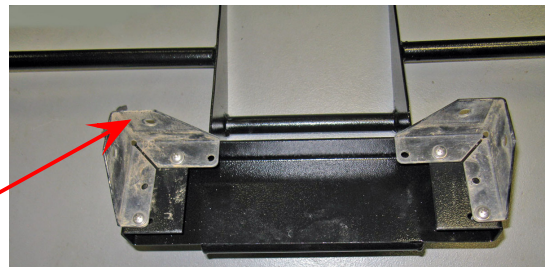
BSG YA3 3080K Brush Guard Yamaha G14/G16/G19/G22



Wear appropriate eye protection!



Remove front bumper and save the upper mounting bolts.



Remove the bumper mounting brackets and transfer to the brush guard. Square mount the brackets at first and snug the bolts. Place the assembly onto the car and adjust the brackets for upper mounting bolt alignment. Once you have the alignment tighten the bracket bolts. Set the assembly back on the car and install the upper mounting bolts and tighten.

